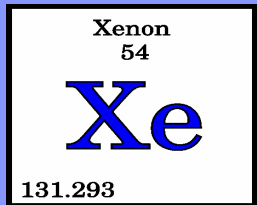


boundary devices



The elements of your next design.

Introduces...

The Xenon Board

The Xenon Board is the newest member of the Boundary Devices family. The Xenon is based on the Texas Instruments powerful, new DaVinci TMS320DM6443 processor that features an ARM9 and DSP core. DaVinci was specifically designed for high-definition digital video applications.

Because of the high performance digital video output, the Xenon board is ideal for set top box applications, digital signage and streaming video. The Xenon Board provides stunning high-definition video at a fraction of the cost of other solutions while maintaining extremely low power usage.

The Xenon Board has been designed with customer flexibility in mind. With the use of a high speed SODIMM connector, the Xenon can be connected to variety of different peripheral boards. A peripheral board can be custom designed by Boundary Devices to fit a specific application. A sample peripheral board can be seen in Figure 2.

The following are additional highlights of the Xenon and peripheral boards:

- Texas Instruments DaVinci Processor
 - 594 MHz DSP
 - 297 MHz ARM 9
- Up to 256MB DDR2
- 128MB NandFlash
- HD Resolution Video Output
- Supports Windows CE or Linux Operating Systems
- 4-Wire/5 Wire Resistive Touch-Screen Support
- 44KHz Stereo 16-Bit Audio Output, for Headphones or Speakers
- 44KHz Monaural Audio Input (microphone)
- 3 RS-232 or TTL Serial Ports
- 1 High-Speed USB 2.0 OTG (Master/Slave)
- RS485 Support Available
- DVI Daughter Board Available

For additional information on Xenon and all other Boundary Devices products, please visit our website: www.boundarydevices.com

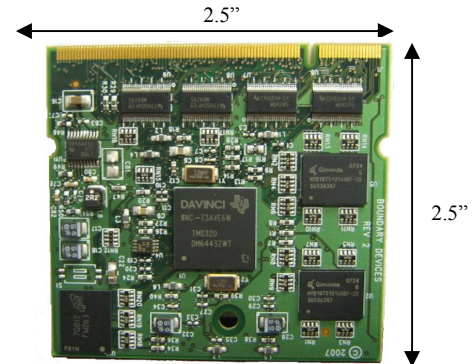


Fig. 1 Xenon

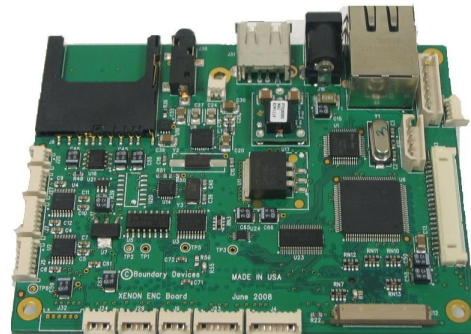


Fig. 2 Xenon Peripheral Board

- Built-in 10/100 Ethernet Controller,
- Easy to Interface with Magnetic Stripe Readers, Bar Code Scanners, Printers and Keypads
- SD Slot for Expanded Storage (up to 8GB)
- General Purpose I/O for Device Control
- I2C Bus
- LVDS Support
- Power-Over-Ethernet Capability With pluggable PoE Module



7200 W Oakland St
Chandler, AZ 85226
(480) 222-4900
www.wattersinc.com